

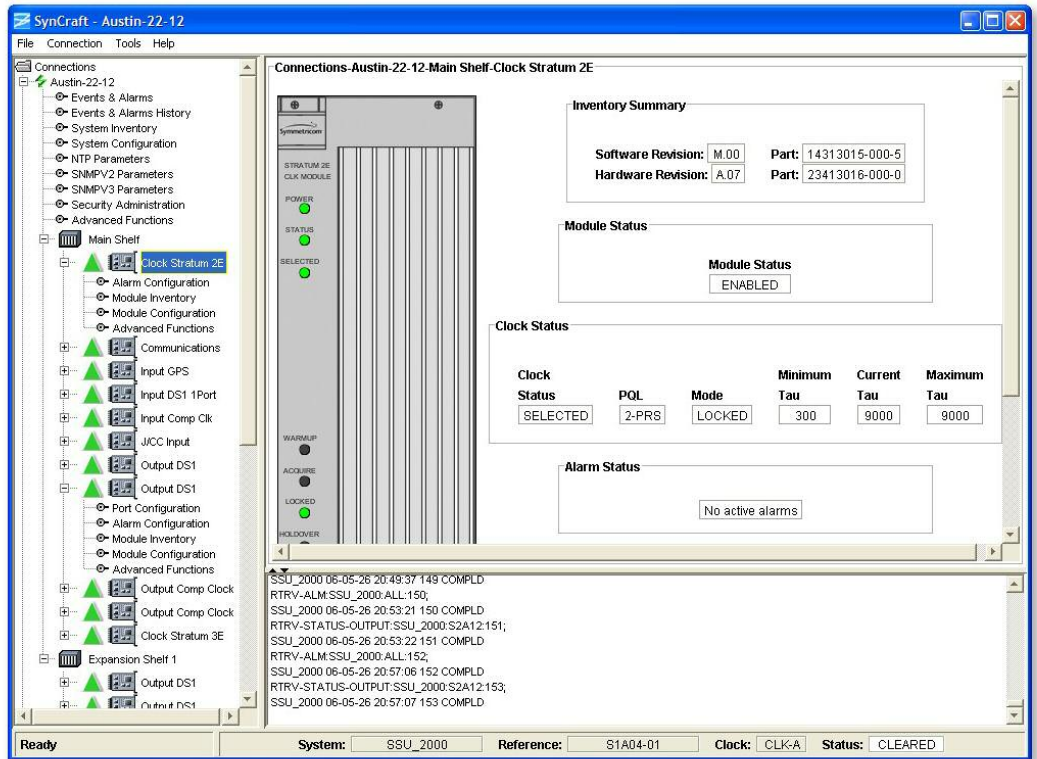


SynCraft

Complete Synchronization Local Manager

KEY FEATURES

- Fault Management
- Configuration Management
- Inventory Management
- Performance Management
- Security Management



Physical view along with configuration data for a SSU2000 Clock card

INTRODUCTION

Symmetricom's SynCraft® is a comprehensive synchronization management solution providing the full extent of FCAPS functionality without the frustration of complex operability. It utilizes current JAVA technology to provide feature rich graphical interfaces and is consistent to generic Microsoft Windows® applications.

Superior management features, such as remote firmware upgrades and provisioning

to the port level, eliminates the need of onsite assistance with the exception of physical changes to the network element.

FAULT MANAGEMENT

SynCraft is an event driven graphical application. Following connection to an element, and the applications initial gathering of element data, the interface refreshes its display whenever an event from the element changes the elements status.

Fault Management Features:

- Current Alarm List
- Real Time System Status LEDs
- Real Time Card/Port Status LEDs
- Graphical Satellite Health Status

CONFIGURATION MANAGEMENT

SynCraft presents the user with both physical and logical views of the network element and full accessibility to configure system level, module level and even port level characteristics.

Pick-lists of all the various options are presented throughout, reducing the customer requirements to manually enter information. Context sensitive help is consistent throughout the application so the customer may be educated in the area of their choice.

When a user modifies a configuration that may cause an affect to the operation of the unit, a confirmation window announces the potential risk and requires confirmation of the request. Two levels of confirmation are presented whenever the elected configuration may cause an affect on the network.

Configuration Management Features:

- Physical and Logical representation
- Pick-lists of selectable choices
- Module/Port level configurations
- Port identification
- Remote firmware upload

INVENTORY MANAGEMENT

Real time inventory is easily displayed on all managed elements.

Typical inventory information available includes:

- Serial number
- Hardware part number
- Hardware revision
- Software part number
- Software revision
- Access identifier
- Description
- Manufactured date
- Last reset date

PERFORMANCE MANAGEMENT

Performance information collected and graphed from a synchronization supply unit provides indication of how well your network is performing. MTIE, TDEV and phase performance parameters can be collected and graphed from any SSU in real time.

The graphing package used by SynCraft is extensive. The user may view graphs in color or black and white, zoom to portions of the graph, print the graph or save it in either CSV or JPEG format.

Performance Management Features:

- Real time performance graphing
- Historical performance graphing
- Graph printing
- Save graphs as either JPEG or CSV
- Performance/mask comparison charting

SECURITY MANAGEMENT

SynCraft allows the user to administer the security account information of the network element. All user/password account information is encrypted via display or logs to further impede tampering of the network.

An advanced security option is available during installation. If the user elects this option SynCraft eliminates the ability to setup user/password information, and the user is required to enter this manually in order to access an element.

Security Management Features:

- NE security account
- Encrypted account information
- Advanced security option during installation

RECOMMENDED MINIMAL REQUIREMENTS FOR SYNCRAFT

Requirements	SynCraft
Operating System	a) Windows XP b) Windows 2000 SP1 or later
Processor	200 MHz Pentium
RAM	128 MB
Hard Drive	1 GB
CDROM	for installation only
Monitor	15 inch SVGA
Interface	TCP/IP, RS-232, Modem

SynCraft provides management control and remote firmware upgrades of the SSU 2000, TimeProvider, TimeHub, OfficeTime 21, TSG 3800, PRR 10 and PRS 50 product families.

SynCraft operates on Microsoft Windows 2000 and XP operating systems.



SYMMETRICOM, INC.
2300 Orchard Parkway
San Jose, California
95131-1017
tel: 408.433.0910
fax: 408.428.7896
info@symmetricom.com
www.symmetricom.com